

The Cattle Range



Slaughter Steer Feedyard Close-Outs

Current & Future (Projected) Closeouts: Profit/(Loss)
For the week ending January 16, 2026

Closeout projections are for cattle placed on feed by a cattle owner at a commercial feedyard and not for cattle owned by a vertically integrated company such as a beef processing company or a feedyard feeding cattle at cost. Cattle cost, cost of gain, and selling price will vary on a regional basis. Cost includes \$15 per head for freight to feedyard.

Typical closeout for un-hedged steers sold this week:

- Placed On Feed 190 days ago = July 10, 2025
- Projected P/(L) based on the futures when placed on feed: **(\$66.88)**

| | |
|---|-------------------|
| *Cost of 800 lb. steer @ \$321.84 per cwt. + \$15 freight: | \$2,589.72 |
| Feed Cost for 700 lbs. @ \$1.08 per lb. | \$756.00 |
| Interest on cattle cost for 190 days: | \$111.22 |
| Interest on feed cost: | \$16.23 |
| Total Cost & Expense: | \$3,473.17 |
| **Sale proceeds: 1,500 lb. steer @ \$233.00 per cwt: | \$3,495.00 |
| This week's Profit/(Loss) per head: | \$21.83 |
| Profit/(Loss) per head for previous week: | \$90.35 |
| Change from previous week: | -\$68.52 |
| Sale price necessary to breakeven: | \$231.54 |

* CME Feeder Cattle Index ** USDA Market News

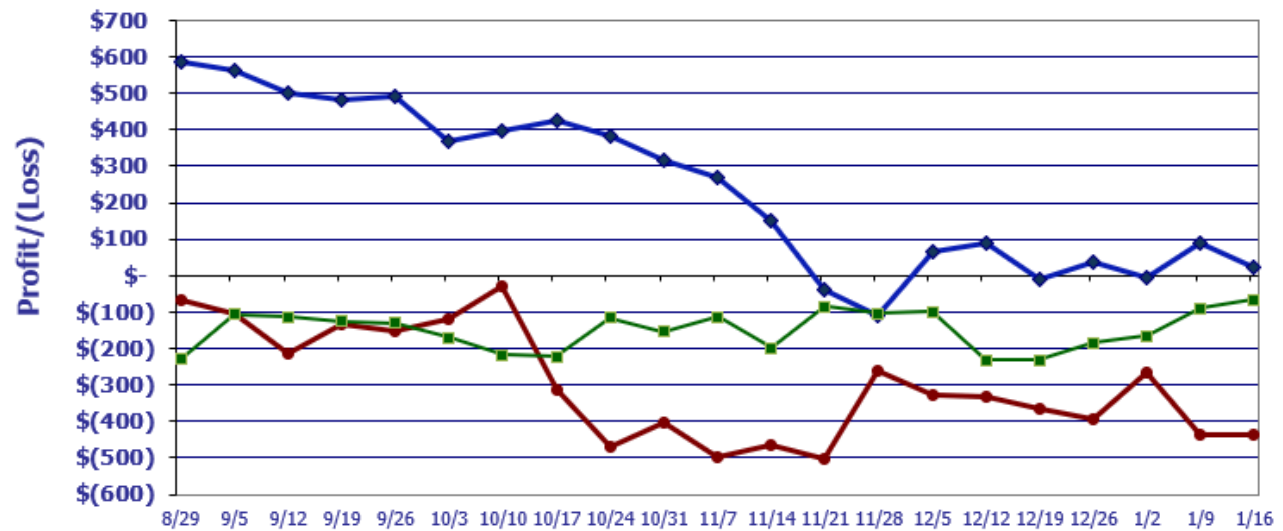
Projected closeout for steers placed on feed this week:

- Projected Sale Date @ 190 days on feed = July 25, 2026

| | |
|---|-------------------|
| *Cost of 800 lb. steer @ \$369.42 per cwt. + \$15 freight: | \$2,970.36 |
| Feed Cost for 700 lbs. @ \$1.07 per lb. | \$742.00 |
| Interest on cattle cost for 190 days: | \$119.83 |
| Interest on feed cost: | \$14.97 |
| Total Cost & Expense: | \$3,847.16 |
| **Sale proceeds: 1,500 lb. steer @ \$227.25 per cwt: | \$3,408.75 |
| This week's Profit/(Loss) per head: | (\$438.41) |
| Profit/(Loss) per head for previous week: | (\$436.26) |
| Change from previous week: | -\$2.15 |
| Sale price necessary to breakeven: | \$256.48 |

* CME Feeder Cattle Index ** August Live Cattle Futures Contract

Feedyard Close-Outs for the weeks ending...

www.cattlerange.com


Closeout for un-hedged steers placed on-feed 200 days ago & sold this week: **\$21.83**
 Projection based on the futures when placed on-feed 190 days ago: **(\$66.88)**
 Projection based on the futures for steers placed on-feed this week: **(\$438.41)**

Feedyard Close-Outs - 5 Year Moving Averages...

www.cattlerange.com
