

The Cattle Range



Slaughter Steer Feedyard Close-Outs

Current & Future (Projected) Closeouts: Profit/(Loss)
For the week ending August 22, 2025

Closeout projections are for cattle placed on feed by a cattle owner at a commercial feedyard and not for cattle owned by a vertically integrated company such as a beef processing company or a feedyard feeding cattle at cost. Cattle cost, cost of gain, and selling price will vary on a regional basis. Cost includes \$15 per head for freight to feedyard.

Typical closeout for un-hedged steers sold this week:

- Placed On Feed 200 days ago = February 3, 2025
- Projected P/(L) based on the futures when placed on feed: **(\$232.75)**

*Cost of 800 lb. steer delivered @ \$280.63 per cwt. + \$15 freight:	\$2,260.04
Feed Cost for 700 lbs. @ \$1.03 per lb.	\$721.00
Interest on cattle cost for 200 days:	\$117.65
Interest on feed cost:	\$18.77
Total Cost & Expense:	\$3,117.45
**Sale proceeds: 1,500 lb. steer @ \$244.96 per cwt:	\$3,674.40
This week's Profit/(Loss) per head:	\$556.95
Profit/(Loss) per head for previous week:	\$542.17
Change from previous week:	+14.78
Sale price necessary to breakeven:	\$207.83

* CME Feeder Cattle Index ** USDA Market News

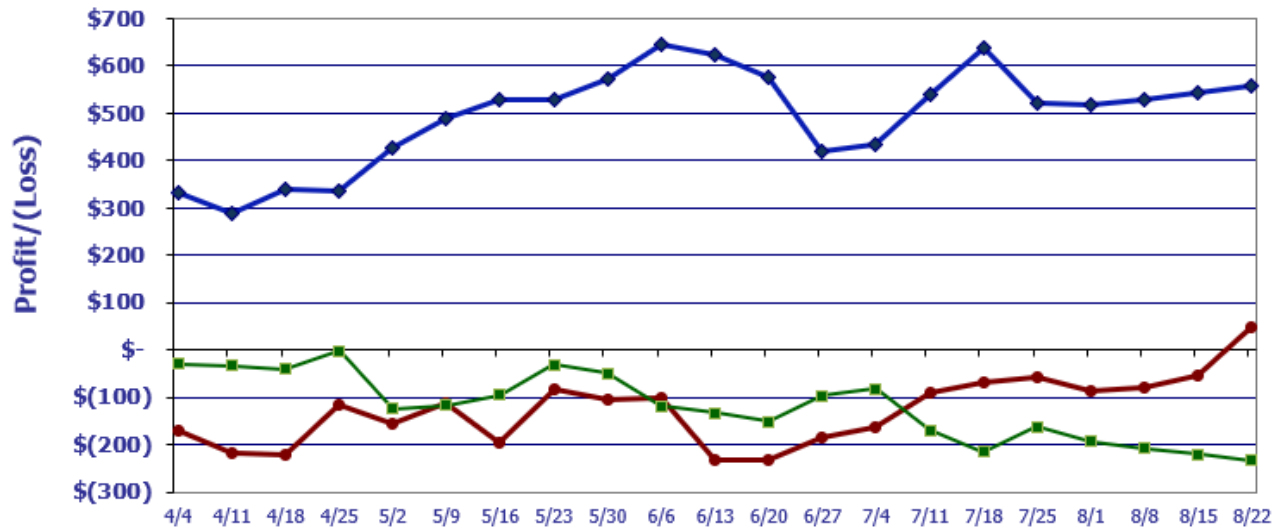
Projected closeout for steers placed on feed this week:

- Projected Sale Date @ 200 days on feed = March 10, 2026

*Cost of 800 lb. steer delivered @ \$347.44 per cwt. + \$15 freight:	\$2,794.52
Feed Cost for 700 lbs. @ \$0.87 per lb.	\$609.00
Interest on cattle cost for 200 days:	\$130.16
Interest on feed cost:	\$14.18
Total Cost & Expense:	\$3,585.75
**Sale proceeds: 1,500 lb. steer @ \$239.80 per cwt:	\$3,597.00
This week's Profit/(Loss) per head:	\$49.14
Profit/(Loss) per head for previous week:	(\$52.89)
Change from previous week:	+\$102.03
Sale price necessary to breakeven:	\$236.52

* CME Feeder Cattle Index ** April Live Cattle Futures Contract

Feedyard Close-Outs for the weeks ending...



Closeout for un-hedged steers placed on-feed 200 days ago & sold this week: **\$556.95**
 Projection based on the futures when placed on-feed 200 days ago: **(\$232.75)**
 Projection based on the futures for steers placed on-feed this week: **\$49.14**

Feedyard Close-Outs - 5 Year Moving Averages...

