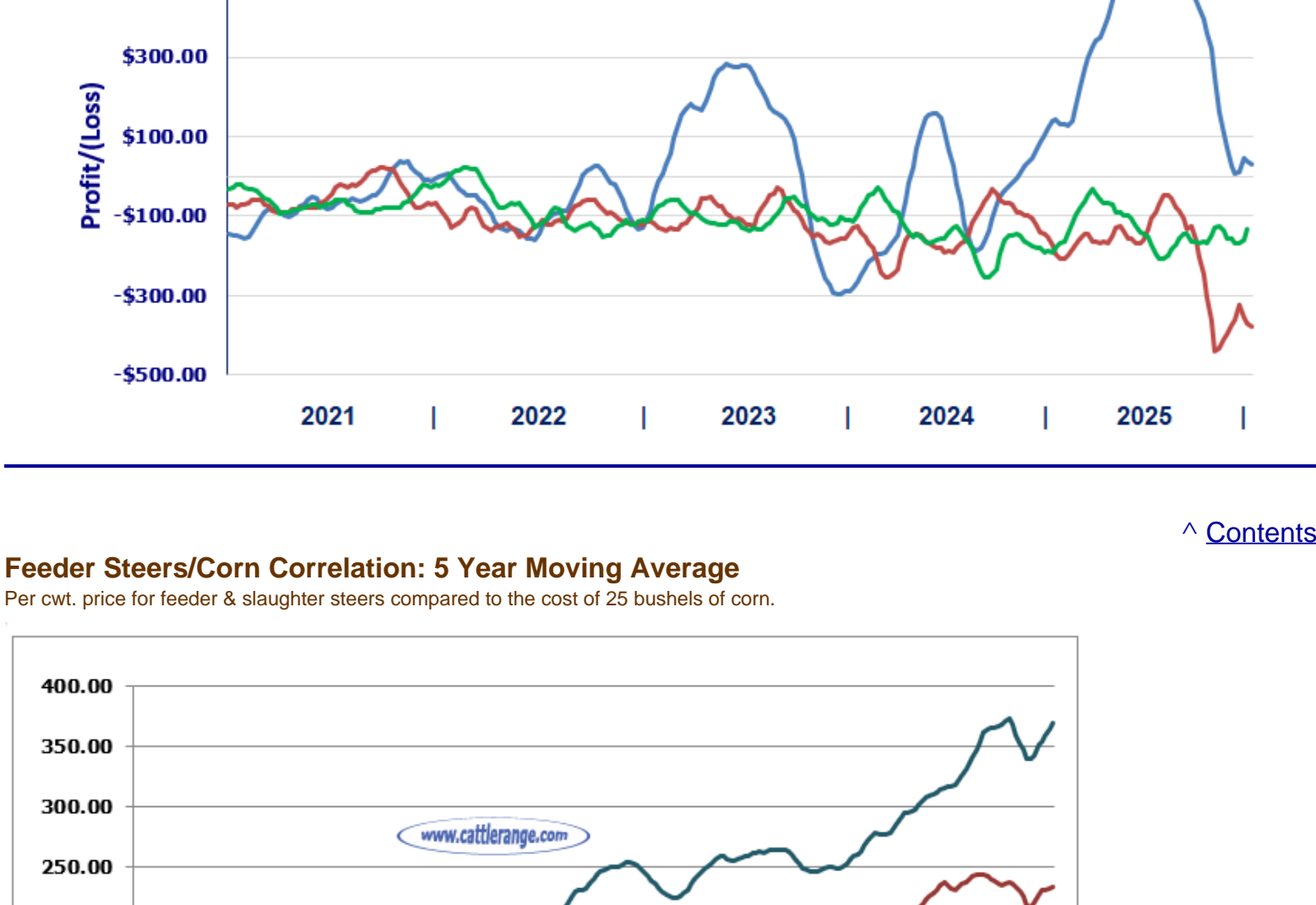






Feedyard Close-Outs - 5 Year Moving Averages...

www.cattlerange.com



Contents

Federally Inspected Slaughter Cattle by Class: Released by USDA Market News Service for last week.

	Head	% of Total
Steers	273,087	48.7%
Heifers	174,209	31.1%
Dairy Cows	60,284	10.7%
Other Cows	46,078	8.2%
Bulls	7,211	1.3%
<b>Total</b>	<b>560,869</b>	

**Livestock Slaughter under Federal Inspection:**

	Head	% of Total
Steers	273,087	48.7%
Heifers	174,209	31.1%
Dairy Cows	60,284	10.7%
Other Cows	46,078	8.2%
Bulls	7,211	1.3%
<b>Total</b>	<b>560,869</b>	

Contents



Alberta Fed Cattle Prices: Alberta Beef Producers - Calgary AB

Alberta direct cattle sales this week have seen light trade develop with dressed sales ranging from \$505.00-508.00/cwt delivered (mostly \$508.00/cwt delivered) steady with the previous week. Cattle that traded were being scheduled anywhere from immediate to the second half of February delivery. US packer interest was noted but no cash sales were confirmed. During the third quarter of 2022 feedlot placements over 800lbs were below last year this should support the first quarter fed market and would suggest lighter fed numbers are still in front of us. Not all the cattle on this weeks cash list were marketed and some cattle will be carried into next week.

Prices expressed in Canadian Dollars

Contents

Boxed Beef Cutouts:

USDA Estimated Boxed Beef Cut-out Values as of 1/23/26

Based on negotiated prices and volume of boxed beef cuts delivered within 0-21 days and on average industry cutting yields. Values reflect U.S. dollars per 100 pounds.

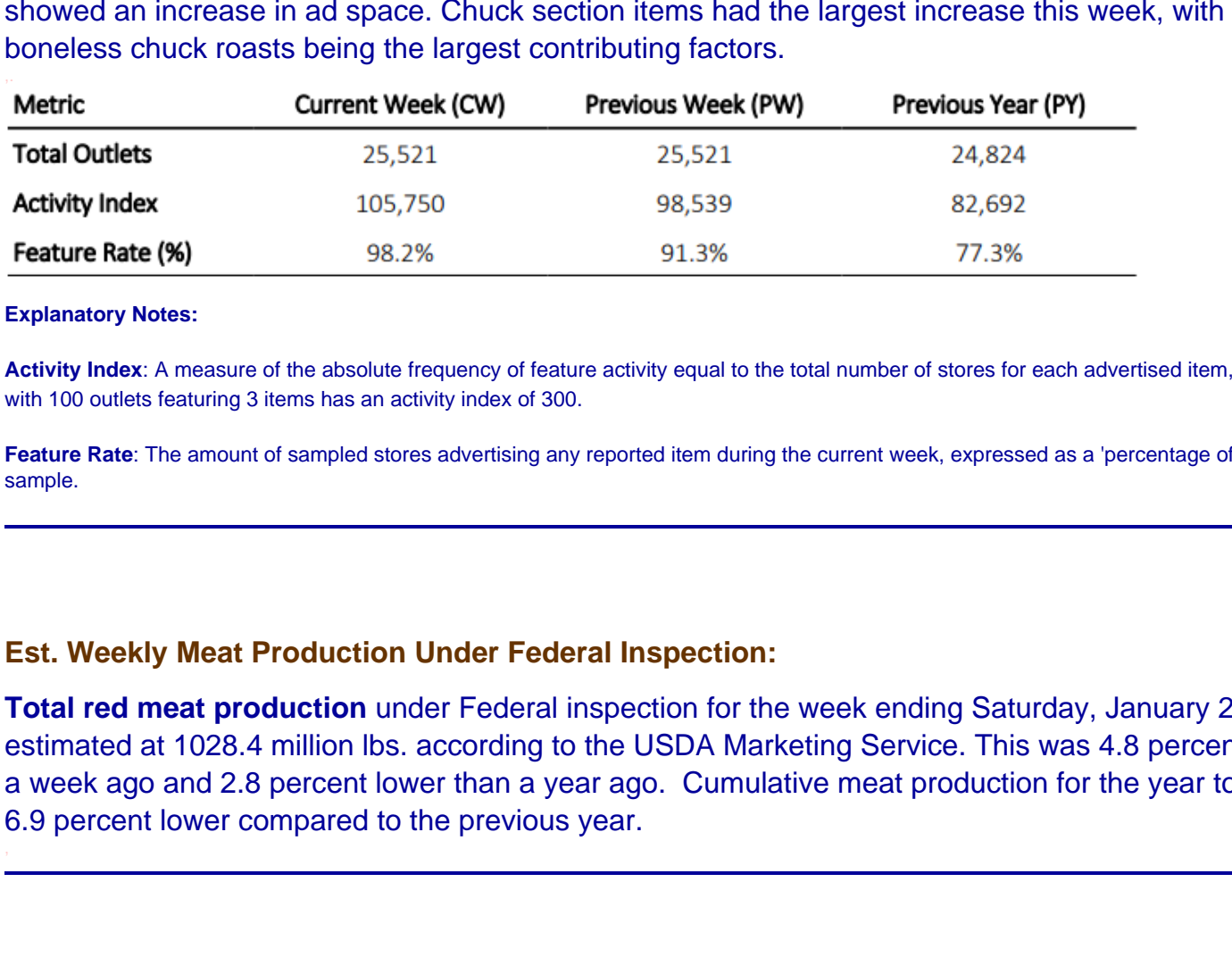
	Choice 600-900	Select 600-900
Current Cutout Values:	368.92	362.39
Change from prior day:	1.47	0.66
Choice/Select spread:		6.53
Total Load Count (Cuts, Trimings, Grinds):		123

Composite Primal Values

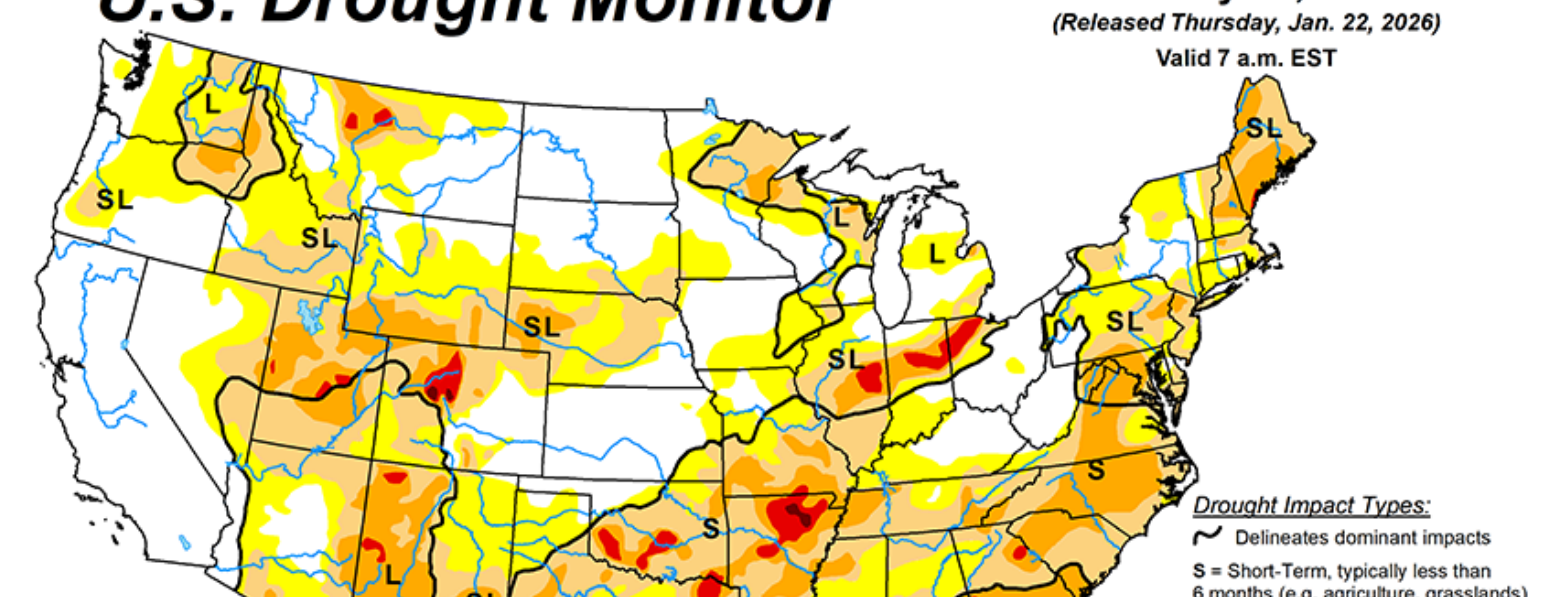
	Choice 600-900	Select 600-900
Primal Rib	492.26	469.74
Primal Chuck	352.68	348.50
Primal Round	325.04	324.82
Primal Loin	455.79	442.50
Primal Brisket	310.38	310.46
Primal Short Plate	250.61	250.61
Primal Flank	171.22	175.38

Load Count And Cutout Value Summary For Prior 5 Days

	Choice 600-900	Select 600-900
Date	Choice	Select
01/22	63	9
01/21	90	11
01/20	80	14
01/19	43	9
01/18	59	8
Current 5 Day Simple Average:	365.01	360.91



USDA National Steer & Heifer Estimated Grading Percent Report: Released by USDA Market News Service for last week.



Contents

USDA National Retail Beef Report: National Summary of Advertised Prices for Beef at Major Retail Supermarket Outlets

This week in beef retail, the Feature Rate increased by 6.9 percent and the Activity Index, increased by 7.3 percent. Compared to last week, items from the brisket, rib, round, sirloin, other/misc., variety meat, and carcass sections showed a decrease in ad space while items from the loin, ground, and deli sections showed an increase in ad space. Chuck section items had the largest increase this week, with bone-in and boneless chuck roasts being the largest contributing factors.

	Current Week (CW)	Previous Week (PW)	Previous Year (PY)
Total Outlets	25,521	25,521	24,824
Activity Index	105,750	98,539	82,692
Feature Rate (%)	98.2%	91.3%	77.3%

Explanatory Notes:

Activity Index: A measure of the absolute frequency of feature activity equal to the total number of stores for each advertised item, e.g., a retailer with 100 outlets featuring 3 items has an activity index of 300.

Feature Rate: The amount of sampled stores advertising any reported item during the current week, expressed as a percentage of the total sample.

Contents

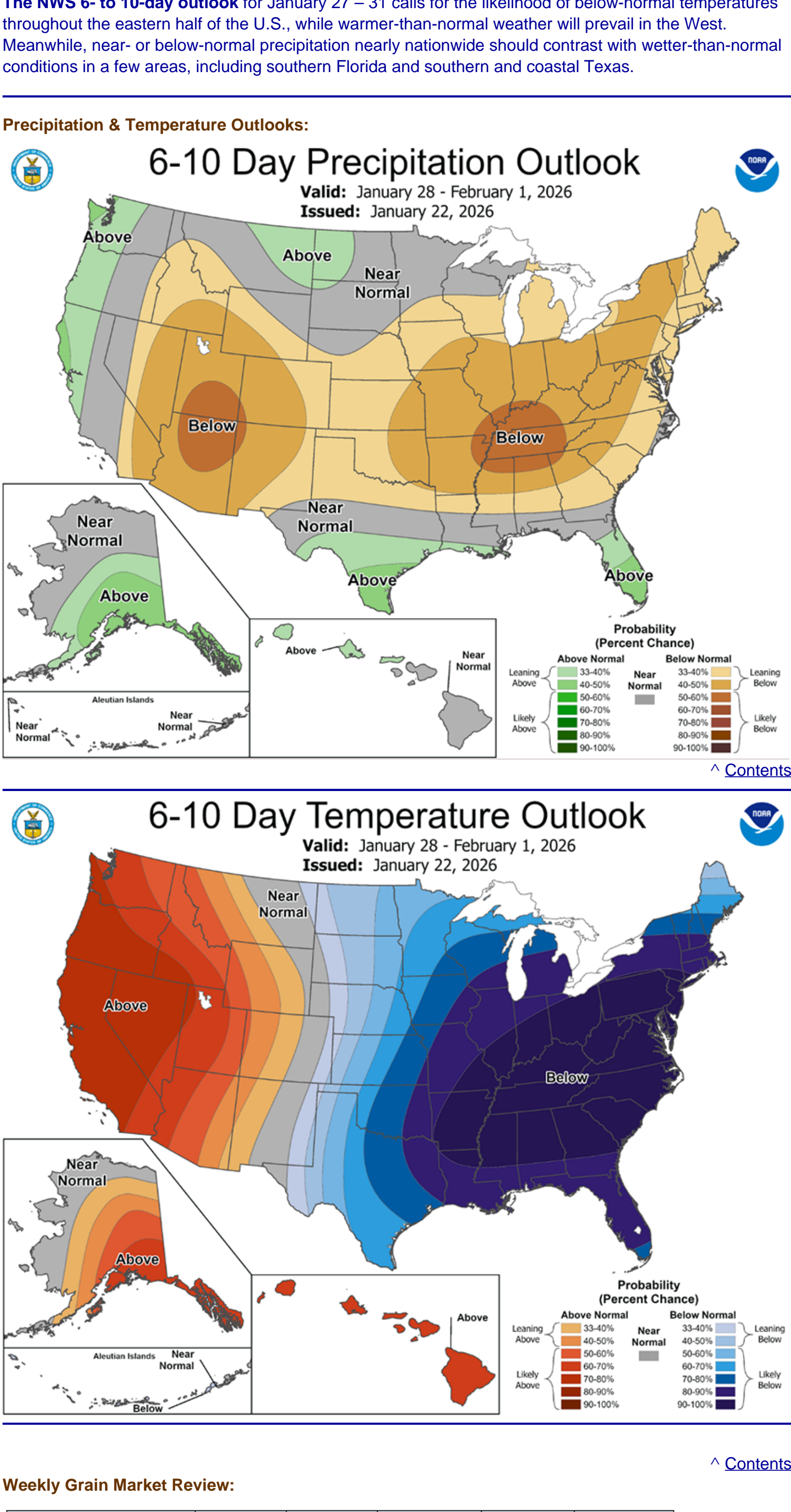
Est. Weekly Meat Production Under Federal Inspection:

Total red meat production under Federal inspection for the week ending Saturday, January 24th was estimated at 1028.4 million lbs. according to the USDA Marketing Service. This was 4.8 percent lower than a week ago and 2.8 percent lower than a year ago. Cumulative meat production for the year to date was 6.9 percent lower compared to the previous year.

Contents

U.S. Drought Monitor

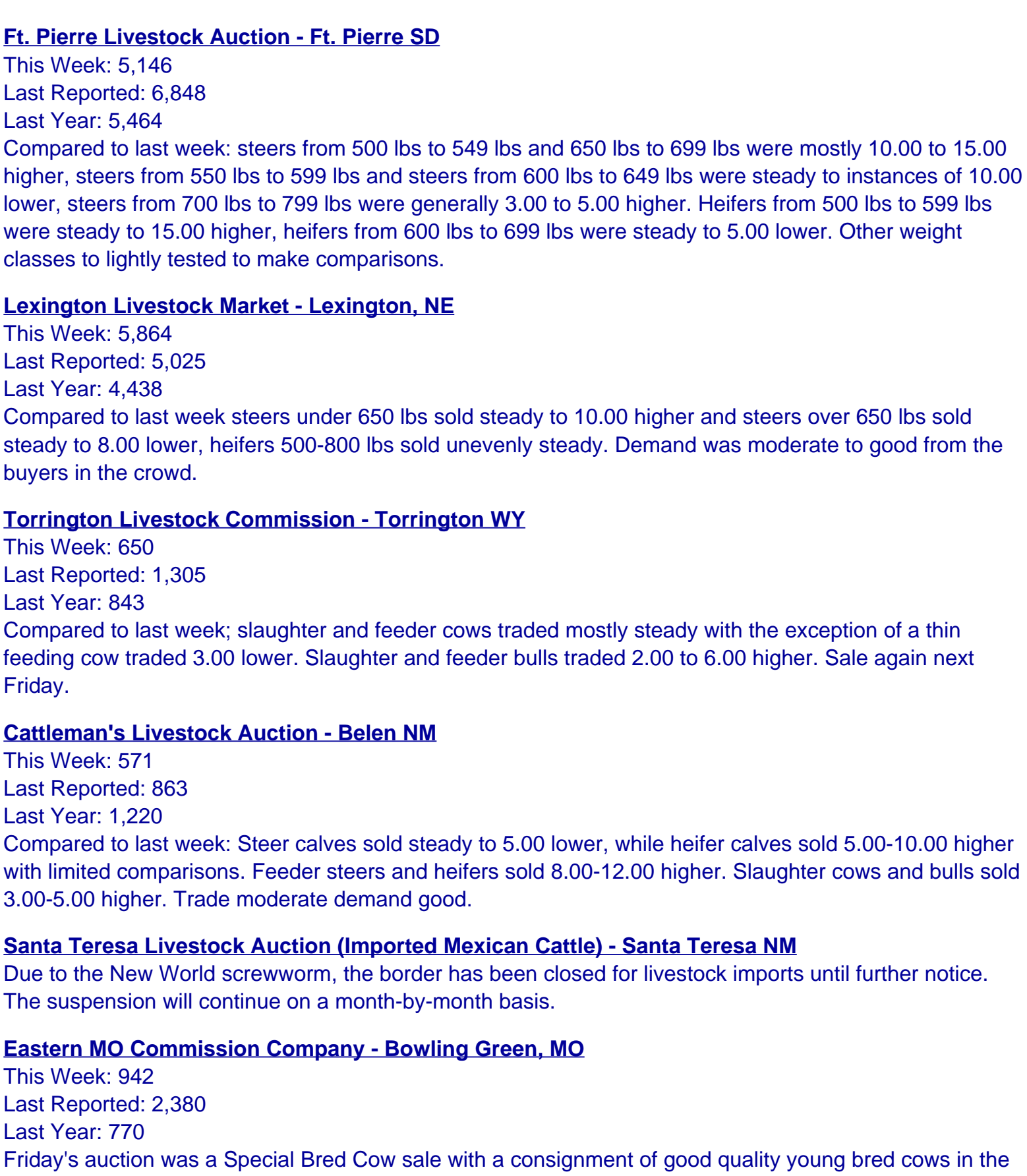
January 20, 2026  
(Released Thursday, Jan. 22, 2026)  
Valid 7 - EST



Click Here to view a Slide Show of Drought Monitor maps for the last 12 weeks



Canadian 90-Day Percent of Average Precipitation:

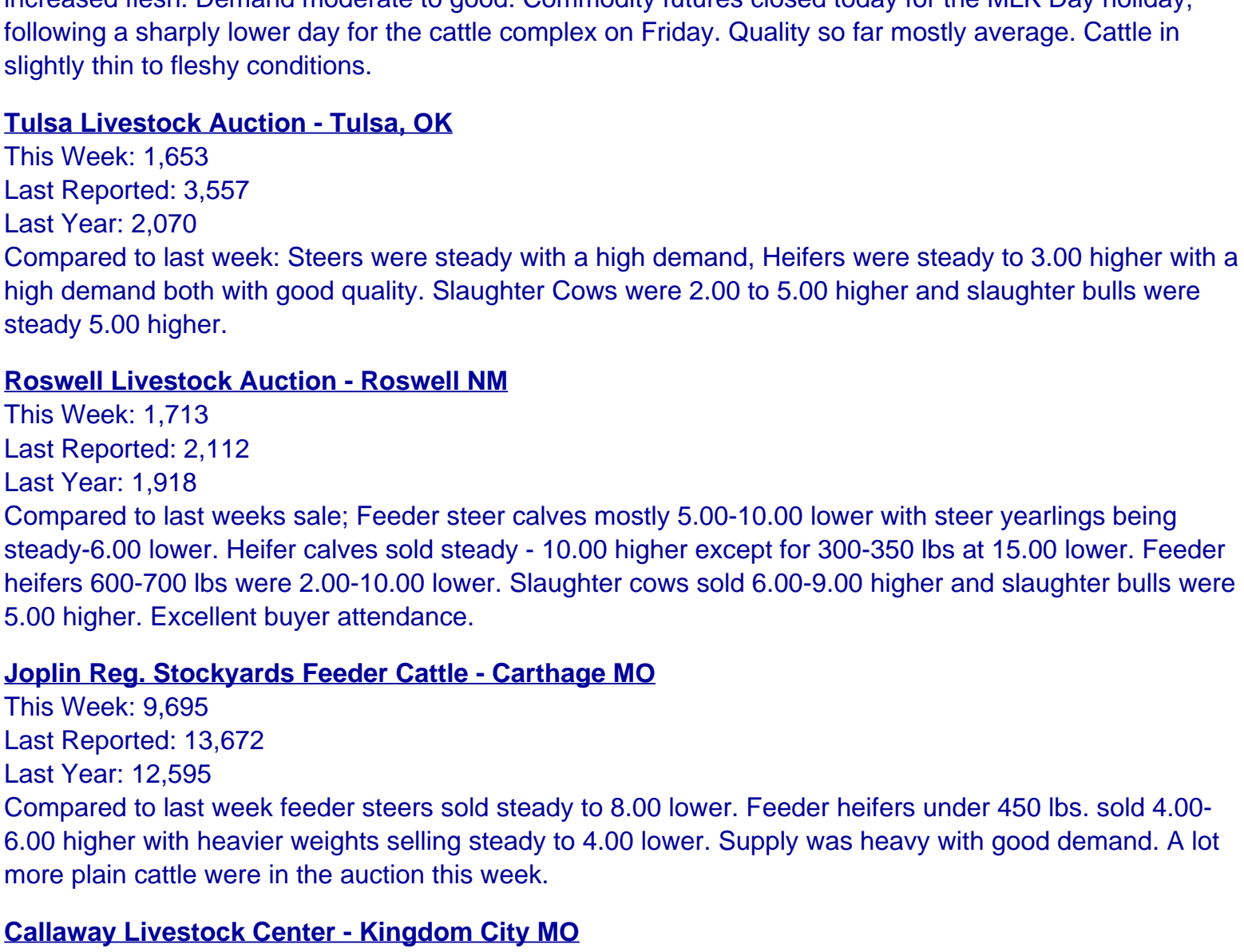


Looking ahead...

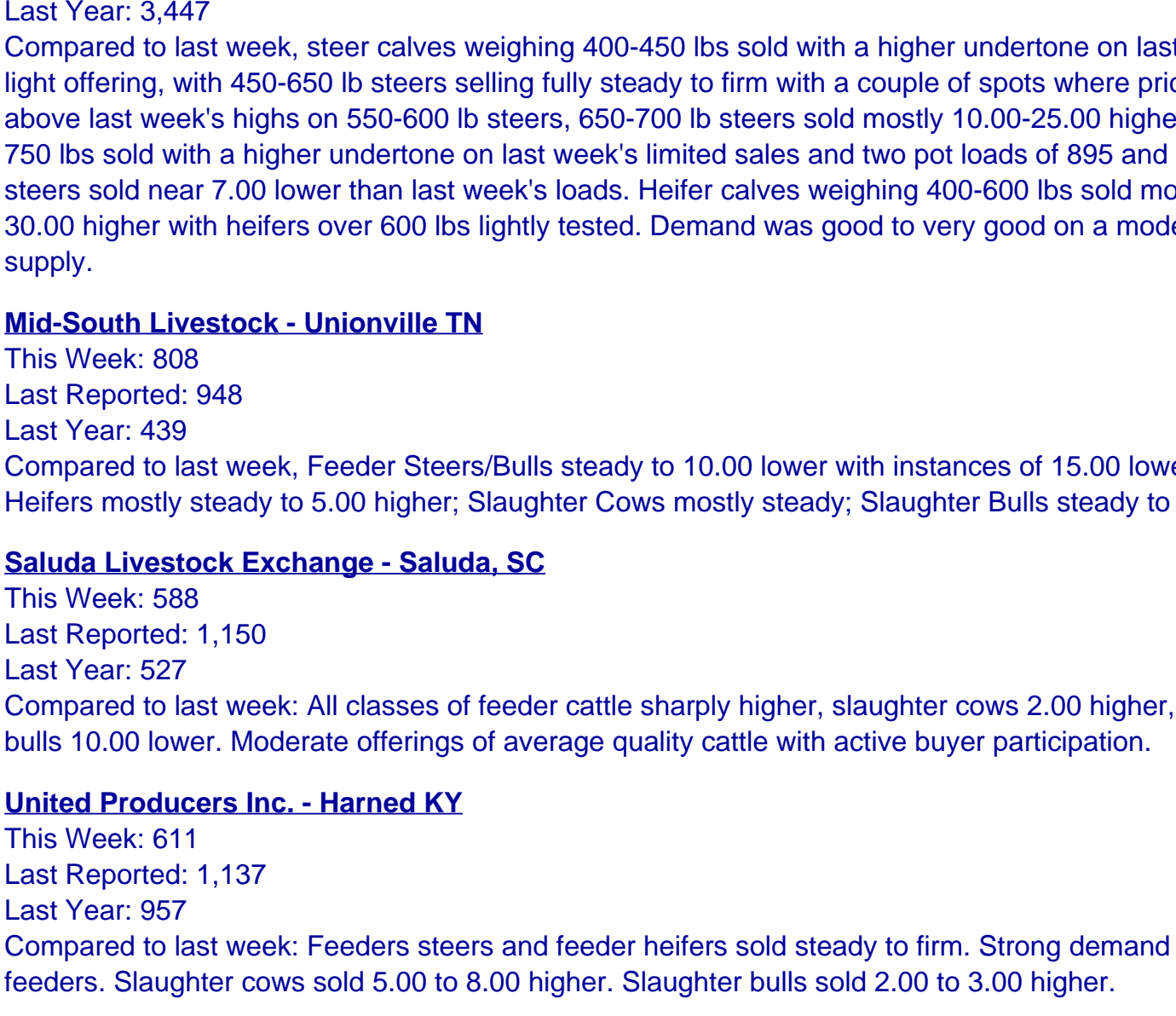
From January 23-26, an expansive and potentially dangerous winter storm will unfold from southern sections of the Rockies and Plains to the middle and southern Atlantic States, excluding areas along and near the Gulf Coast. Much of the South will face multiple weather hazards, including wintry precipitation (snow, sleet, or freezing rain), gusty winds, and unusually low temperatures. Wintry weather may extend at least as far south as central Texas and northern sections of Louisiana, Mississippi, Alabama, and Georgia. Post-storm temperatures should fall to 10°F or below along and north of a line from central Texas to northern Georgia, with particular concern for areas that lose electricity due to downed power lines from accumulations of ice and snow. Farther north, sub-0°F readings will be common as far south as the central Plains and the Ohio Valley. The storm is likely to have serious agricultural impacts, including significant stress on livestock due to exposure to cold, windy, wintry precipitation, or a combination of weather extremes. Temperatures could briefly plunge to -30°F or below from North Dakota into the upper Great Lakes region.

The NWS 6- to 10-day outlook for January 27 - 31 calls for the likelihood of below-normal temperatures throughout the eastern half of the U.S., while warmer-than-normal weather will prevail in the West. Meanwhile, near- or below-normal precipitation nearly nationwide should contrast with wetter-than-normal conditions in a few areas, including southern Florida and southern and coastal Texas.

Precipitation & Temperature Outlooks:

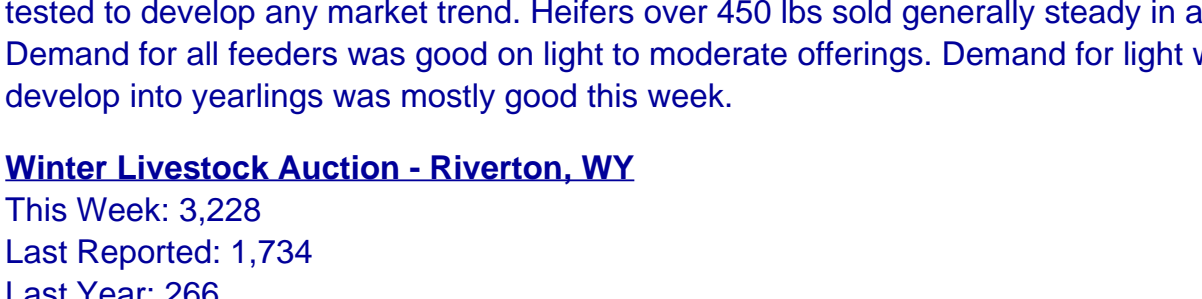


Contents



Weekly Grain Market Review:

Grain Prices	01/23/26	Last Week	1 Month Ago	1 Year Ago	5 Yr. Avg.
Omaha Corn	4.12	4.09	4.28	4.21	5.53
Kansas City Wheat	5.19	5.15	4.97	5.72	6.69
March Corn Futures	4.3050	4.2475	4.4375	4.8650	5.3923
March Wheat Futures	5.2950	5.1800	5.0975	5.4400	6.7314



Contents

Regional Auction Reports... Click Link to view entire report

Last Friday & Saturday Auctions:

Burwell Livestock Auction Market - Burwell NE

This Week: 2,990  
Last Reported: 2,900  
Last Year: 4,990  
Compared to last week steers traded unevenly steady. No comparable offerings for heifer. Demand was good with several buyers and active internet bidding. Next Auction Date Jan 23rd SPECIAL BRED COW & HEIFER AUCTION.

Ft. Pierre Livestock Auction - Ft. Pierre SD

This Week: 5,146  
Last Year: 1,918  
Last Reported: 6,848  
Last Year: 5,464  
Compared to last week: steers from 500 lbs to 549 lbs and 850 lbs to 699 lbs were mostly 10.00 to 15.00 higher, steers from 550 lbs to 599 lbs and steers from 600 lbs to 649 lbs were steady to instances of 10.00 lower, steers from 700 lbs to 799 lbs were generally 3.00 to 5.00 higher. Heifers from 500 lbs to 599 lbs were steady to 15.00 higher, heifers from 600 lbs to 699 lbs were steady to 5.00 lower. Other weight classes to lightly tested to make comparisons.

Lexington Livestock Market - Lexington, NE

This Week: 5,864  
Last Reported: 5,025  
Last Year: 4,438  
Compared to last week: steers under 650 lbs sold steady to 10.00 higher and steers over 650 lbs sold steady to 8.00 lower, heifers 500-800 lbs sold unevenly steady. Demand was moderate to good from the buyers in the crowd.

Torrington Livestock Commission - Torrington WY

This Week: 650  
Last Reported: 1,305  
Last Year: 843  
Compared to last week; slaughter and feeder cows traded mostly steady with the exception of a thin feeding cow traded 3.00 lower. Slaughter and feeder bulls traded 2.00 to 6.00 higher. Sale again next Friday.

Cattleman's Livestock Auction - Belen NM

This Week: 571  
Last Reported: 863  
Last Year: 1,220  
Compared to last week: Steer calves sold steady to 5.00 lower, while heifer calves sold 5.00-10.00 higher with limited comparisons. Feeder steers and heifers sold 8.00-12.00 higher. Slaughter cows and bulls sold 3.00-5.00 higher. Trade moderate demand good.

Santa Teresa Livestock Auction (Imported Mexican Cattle) - Santa Teresa NM

Due to the New World screwworm, the border has been closed for livestock imports until further notice. The suspension will continue on a month-by-month basis.

Eastern MO Commission Company - Bowling Green, MO

This Week: 942  
Last Reported: 2,380  
Last Year: 770  
Friday's auction was a Special Bred Cow sale with a consignment of good quality young bred cows in the 3rd stage 3-5 yrs of age selling firm 3950.00-4250.00 and a consignment of bred heifers in the 3rd stage selling at 4050.00. The balance were mostly bred cows 5 yrs to short sold mouth mostly in the 3rd stage. Feeder cattle were lightly tested selling in small packages and groups. Slaughter steers and heifers along with a large consignment of slaughter cows all sold fully steady.

Smith County Commission - Carthage TN

This Week: 752  
Last Reported: 402  
Last Year: 1,022  
Compared to last week Feeder Steers/Heifers mostly steady; Feeder Bulls steady to 5.00 lower; Slaughter Cows/ Bulls mostly steady.

Carolina Stockyards - Livestock Auction - Siler City, NC

This Week: 779  
Last Reported: 1,194  
Last Year: 1,215  
Slaughter cattle steady this week compared to last week. Feeder cattle were steady to 3.00 to 4.00 lower this week compared to last week. Demand was moderate; market activity and buyer interest were moderate. Offerings moderate with quality average.

Monday Auctions:

Sioux Falls Regional Livestock Auction - Worthing SD

This Week: 3,156  
Last Reported: 2,917  
Last Year: 6,306  
Compared to last week: Feeder steers and heifers unevenly steady, except 700-800 lbs steers 10.00 to 15.00 lower. Very good demand for this very large offering of home raised steers and heifers, along with a couple of consignments of long strings of yearlings and heifers.

Tri-State Livestock Auction Market - McCook NE

This Week: 2,332  
Last Reported: 2,917  
Last Year: 6,306  
Tri-State Livestock has discontinued their market reporting for the time being.

Oklahoma National Stockyards Feeder Cattle - Oklahoma City OK

This Week: 9,800  
Last Reported: 11,549  
Last Year: 7,205  
Compared to last week: Feeder cattle and calves mostly steady to 4.00 lower on lesser quality and increased flesh. Demand moderate to good. Commodity futures closed today for the MLK Day holiday, following a sharply lower day for the cattle complex on Friday. Quality so far mostly average. Cattle in slightly thin to fleshy conditions.

Tulsa Livestock Auction - Tulsa, OK

This Week: 1,653  
Last Reported: 3,557  
Last Year: 2,070  
Compared to last week: Steers were steady with a high demand, heifers were steady to 3.00 higher with a high demand both with good quality. Slaughter Cows were 2.00 to 5.00 higher and slaughter bulls were steady 5.00 higher.

Roswell Livestock Auction - Roswell NM

This Week: 1,713  
Last Reported: 2,112  
Last Year: 1,166  
Compared to last weeks sale: Feeder steer calves mostly 5.00-10.00 lower with steer yearlings being steady 6.00-7.00 lower. Heifer calves sold steady - 10.00 higher except for 300-350 lbs at 15.00 lower. Feeder heifers 600-700 lbs were 2.00-10.00 lower. Slaughter cows sold 6.00-9.00 higher and slaughter bulls were 5.00 higher. Excellent buyer attendance.

Joplin Reg. Stockyards Feeder Cattle - Carthage MO

This Week: 9,695  
Last Reported: 13,672  
Last Year: 12,595  
Compared to last week feeder steers sold steady to 8.00 lower. Feeder heifers under 450 lbs. sold 4.00-6.00 higher with heavier heifers selling steady to 4.00 lower. Supply was heavy with good demand. A lot more plain cattle were in the auction this week.

Callaway Livestock Center - Kingdom City MO

This Week: 2,539  
Last Reported: 3,688  
Last Year: 3,447  
Compared to last week, steer calves weighing 400-450 lbs sold with a higher undertone on last week's light offering, with 450-650 lb steers selling fully steady to firm with a couple of spots where prices reached above last week's highs on 550-600 lb steers, 650-700 lb steers sold mostly 10.00-25.00 higher with 700-750 lbs sold with a higher undertone on last week's limited sales and two pot loads of 895 and 915 lb steers sold near 7.00 lower than last week's loads. Heifer calves weighing 400-600 lbs sold mostly 15.00-30.00 higher with heifers over 600 lbs lightly tested. Demand was good to very good on a moderate supply.

Mid-South Livestock - Unionville TN

This Week: 808  
Last Reported: 948  
Last Year: 439  
Compared to last week, Feeder Steers/Bulls steady to 10.00 lower with instances of 15.00 lower; Feeder Heifers mostly steady to 5.00 higher; Slaughter Cows mostly steady; Slaughter Bulls steady to 3.00 higher.

Saluda Livestock Exchange - Saluda, SC

This Week: 588  
Last Reported: 1,150  
Last Year: 527  
Compared to last week: All classes of feeder cattle sharply higher, slaughter cows 2.00 higher, slaughter bulls 10.00 lower. Moderate offerings of average quality cattle with active buyer participation.

United Producers Inc. - Harned KY

This Week: 611  
Last Reported: 1,137  
Last Year: 957  
Compared to last week: Feeders steers and feeder heifers sold steady to firm. Strong demand for all feeders. Slaughter cows sold 5.00 to 8.00 higher. Slaughter bulls sold 2.00 to 3.00 higher.

Tuesday Auctions:

Miles City Livestock Commission Auction - Miles City, MT

This Week: 2,332  
Last Reported: 2,784  
Last Year: 1,558  
This Week: 3,156 (1-13-26): Steers under 500 lb were too lightly tested either this week or last week to develop a full market trend, however steady undertones were noticed. Steers over 500 lbs sold mostly 5.00-10.00 lower in a narrow comparison on a lower quality offering. Heifers under 450 lbs were too lightly tested to develop any market trend. Heifers over 450 lbs sold generally steady in a narrow comparison. Demand for all feeders was good on light to moderate offerings. Demand for light weight cattle suitable to develop into yearlings was mostly good this week.

Winter Livestock Auction - Riverton, WY

This Week: 3,228  
Last Reported: 1,734  
Last Year: 266  
Compared to last Tuesday, on a special feeder calf sale; Slaughter cows and bulls instances 2.00-6.00 lower on a light offering. Feeder calves compared to two weeks ago instances 3.00-5.00 lower. Heifer calves lower undertones noted with only advancement to be 520-550 lbs instances 6.00-5.00 higher. Heifer calves lower undertones noted with only advancement to be 520-550 lbs replacement quality heifers instances 1.00-3.00 higher. Demand good with active buyer participation.

Winter Livestock - La Junta CO

This Week: 5,725  
Last Reported: 5,908  
Last Year: 1,621  
Trade activity and demand was good. Feeder steers under 550lbs sold steady while steers over 550 sold mostly 1.00 to 3.00 lower. Feeder heifers sold unevenly steady across all weight classes.

Beaver Livestock Auction Feeder Cattle - Beaver, OK

This Week: 6,482  
Last Reported: 6,771  
Last Year: 2,640  
Compared to last sale: Feeder steers 2.00-4.00 lower. Steer calves 10.00-15.00 lower on better quality. Feeder heifers over 700 pounds 5.00-10.00 higher. Heifer calves 5.00 lower. Demand overall good, strong on steer calves. Quality average to attractive.

OKC West Livestock Auction - El Reno, OK

This Week: 5,113  
Last Reported: 13,430  
Last Year: 5,321  
Compared to last week: Steer and heifer calves 10.00-20.00 lower. Demand moderate. Quality not as good as last week. Front-end cattle are only slightly lower but those are few and far between.

Lonestar Stockyards - Wildorado, TX

This Week: 5,576  
Last Reported: 5,155  
Last Year: 764  
Compared to last week: Feeder steers and heifers traded uneven across all weight classes, with quality and flesh playing the largest role in pricing. Front end 800 pound steers were 5.00 higher, while higher quality 600-700 pound heifers traded 10.00 to 20.00 higher. Steers and heifers weighing between 700-800 pounds traded mostly weak to 10.00 lower.

Ozarks Regional Stockyards - West Plains MO

This Week: 3,285  
Last Reported: 4,384  
Last Year: 4,071  
Compared to last week, feeder steers and heifers sold steady. Steer and heifer calves were uneven from 5.00 lower to 5.00 higher. Demand was good on a moderate supply. The largest draft of two days was 270 head of 539 lb. steer calves which sold for 508.00/cwt.

Mid-State Stockyards LLP - Letohatchee, AL

This Week: 904  
Last Reported: 1,202  
Last Year: 0  
Compared to one week ago: Slaughter cows and sub's sold steady to 1.00 higher. Replacement cows sold steady. Feeder cattle sold 7.00 to 15.00 higher.

Cathoun Stockyard - Cathoun, GA

This Week: 189  
Last Reported: 202  
Last Year: 0  
Compared to a week ago, Slaughter cows 3.00 to 6.00 higher, Slaughter bulls mostly steady, Replacement cows mostly steady, Feeder steers 3.00 to 5.00 higher, Feeder heifers 4.00 to 7.00 higher, and Feeder bulls 6.00 to 9.00 higher.

Blue Grass Stockyards - Lexington, KY

This Week: 877  
Last Reported: 919  
Last Year: 762  
Compared to last Tuesday the feeder market was stronger in spots with a good quality offering. Feeder steers 300-400 lbs were mostly steady with a limited supply, while the 500-800 lb steers were 8.00 to 10.00 higher or greater in spots with strong demand for long weaned and value added groups and loads. Feeder heifers 400-600 lbs were steady to 4.00 higher, while the yearling heifers appeared stronger but with limited head to head comparisons. Slaughter cows and bulls were 2.00 to 4.00 higher with a limited supply and good demand.

Producers Livestock Auction - Salina, UT

This Week: 2,272  
Last Reported: 2,716  
Last Year: 1,524  
Compared to last week, feeder steers sold 1.00 to 6.00 lower. While feeder heifers selling sharply lower, slaughter cows sold steady to 5.00 higher on breaker and boning cattle. Lean cows going back on feed sold steady. While slaughter bulls sold too light to trend. Trade was active with a good demand and a heavy supply.

Wednesday Auctions:

Hub City Livestock Auction - Aberdeen SD

This Week: 6,217  
Last Reported: 5,845  
Last Year: 4,337  
Compared to last week: best test on steers 550 to 599 lbs 10.00 to 12.00 higher, 600 to 749 lbs mostly steady with instances up to 6.00 higher on 700 to 749 lbs, 750 to 799 lbs 4.00 to 10.00 lower, 800 to 849 lbs 4.00 to 10.00 higher. Best test on heifers 500 to 599 lbs and 700 to 749 lbs mostly steady, 600 to 649 lbs 5.00 to 7.00 higher, 650 to 699 lbs 7.00 to 12.00 lower.

Bassett Livestock Auction - Bassett NE

This Week:  
Last Reported:  
Report unavailable.

Hus & Platts Valley Auction - Kearney NE

This Week: 4,148  
Last Reported: 5,227  
Last Year: 3,484  
Compared to last week steers and heifers over 600 lbs sold steady to 8.00 lower. Demand was moderate to good from the buyers in the crowd.

OKC West - El Reno OK

This Week: 10,367  
Last Reported: 13,430  
Last Year: 5,321  
Compared to last week: Feeder steers and heifers 2.00-7.00 lower. Quality plain to average. Steer and heifer calves 10.00-20.00 lower. Demand moderate. Calf quality not as good as last week.

Clovis Livestock Auction - Clovis, NM

This Week: 1,522  
Last Reported: 3,198  
Last Year: 1,333  
Compared to last week; Steer calves sold 10.00-20.00 lower with the exception of 500-550 lbs being 10.00 higher. Feeder steers 10.00-20.00 lower. Demand moderate. Quality not as good as last week. Front-end cattle are only slightly lower but those are few and far between.

Winter Livestock Feeder Cattle Auction - Dodge City KS

This Week: 4,170  
Last Reported: 2,475  
Last Year: 1,912  
Compared to last week, steers over 900 lbs sold 20.00 higher and heifers over 900 lbs sold 14.00 higher. Steers and heifers under 900 lbs sold 4.00 to 6.00 lower. Boning and Lean utility sold 5.00 higher. Due to weekend winter storm, most feeders were full and fleshy with quality under average. Good demand for heavy supply.



Last Reported: 4,779  
Last Year: 1,988  
Compared to last week: Feeder cattle were all too lightly tested to develop an accurate market trend, however steady undertones were noticed on a lighter poorer quality offering. Demand for all feeder cattle was good to very good for light offerings.

**Mitchell Livestock Auction – Mitchell, SD**

This Week: 3,777  
Last Reported: 5,498  
Last Year: 3,758  
Compared to last week: Feeder steers 700-950 lbs. sold 1.00-6.00 higher. Feeder heifers 550-900 lbs. sold unevenly steady, with a higher undertone on most. Demand was good. Many large load lots in today's market. Seats full of buyers.

**Valentine Livestock Auction - Valentine, NE**

This Week: 1,580  
Last Reported: 4,600  
Last Year: 1,185  
Special Bred Female and Regular sale started the day with 850 weigh-ups, then onto 49 head of Angus bulls averaging \$8700. The Complete Dispersion offerings started the show with a very good demand from several bidders at the barn and internet. The majority of today's consignment were black and black white face offerings in good condition ready to calve March and April.

**Apache Livestock Auction - Apache, OK**

This Week: 1,823  
Last Reported: 3,783  
Last Year: 1,371  
Compared to last week: Feeder steers over 750 lbs. 3.00 to 9.00 higher, under 750 lbs. 10.00 to 20.00 lower. Feeder heifers steady to 15.00 lower. Steer calves and heifer calves 10.00 to 30.00 lower. Quality average to attractive with several nice drafts. Slaughter cows steady to 1:00 lower. Slaughter bulls steady.

**Woodward Wld Avg Cattle - Woodward OK**

This Week: 2,272  
Last Reported: 2,419  
Last Year: 838  
Compared to last week: Steer and heifer calves were too light of test to call a trend, lower undertone was noted. Feeder steers were 2.00 to 7.00 lower. Feeder heifers steady to 5.00 lower. Demand was moderate with an average quality.

**Winter Livestock Auction - Pratt KS**

This Week: 2,300  
Last Reported: 2,589  
Last Year: 444  
Compared to last week, feeder steers 450 lb to 925 lb sold steady to 10.00 lower. Feeder heifers 400 lb to 875 lb sold steady to 10.00 lower. Demand was moderate. Incoming weather was a big topic at the sale barn today. Slaughter cows sold 3.00 to 4.00 higher. Slaughter bulls sold 2.00 to 6.00 lower.

**Farmers & Ranchers Livestock - Salina KS**

This Week: 3,853  
Last Reported: 3,499  
Last Year: 3,025  
Compared to last week, steers over 800 lbs sold steady to 5.00 higher and 600 lbs to 700 lbs sold steady to 5.00 higher. Heifers over 800 lbs sold 6.00 higher and heifers under 800 lbs sold 10.00 lower.

**Cattlemen's Livestock Auction - Dalhart TX**

This Week: 2,491  
Last Reported: 3,960  
Last Year: 1,950  
Compared to last week: Sentiment was largely mixed to lower this week. Mainly due to the plainer quality of cattle and the impending winter storm due to arrive this evening into tomorrow morning. Demand was slow on plainer quality cattle but was more active on the fancier and long weaned cattle. Average yielding boner slaughter cows brought 8.00 higher. Trade on slaughter cattle was active on good demand.

**Producers Livestock Cattle Auction - San Angelo, TX**

This Week:  
Last Reported:  
Last Year:  
\*\*\*Auction NOT be covered this week due to reporters absence \*\*\*

**New Cambria Livestock Market - New Cambria, MO**

This Week: 686  
Last Reported: 1,324  
Last Year: 683  
Compared to last week, steers and heifers traded with a lower undertone. Overall quality was not as attractive as the past couple weeks and the bulk of the offering was unweaned and lacking a full two rounds of shots.

**Bluegrass Stockyards South - Stanford KY**

This Week: 1,053  
Last Reported: 920  
Last Year: 1,393  
Compared to last Thursday: Feeder and yearling steers and heifers unevenly steady. Good demand for feeder and yearling classes. Slaughter cows 8.00-10.00 higher, Slaughter bulls steady, Good demand for slaughter classes.

**Paris Stockyards - Paris KY**

This Week:  
Last Reported:  
Last Year:  
Sale report unavailable

**Toppenish Livestock Auction - Toppenish, WA**

This Week: 1,495  
Last Reported: 1,343  
Last Year: 970  
Compared to last Thursday, stocker and feeder cattle steady to weak in a light test. Feeder cattle futures were down 50 cents in nearby January, with most other contracts facing weakness. The CME Feeder Cattle Index was down \$2.18 to \$365.23 on January 21.

• [Extensive U.S. & Canadian Auction Results are available on The Cattle Range](#)

[^ Contents](#)

**Direct Sales of Feeder & Stocker Cattle...** Click Link to view entire report

**Colorado Direct Cattle Report**

This Week: 5,591  
Last Reported: 1,388  
Last Year: 1,205  
Compared to last week: Not enough current FOB trades to establish a trend. Demand moderate. Supply included: 100% Feeder Cattle (59.9% Steers, 40.1% Heifers). Feeder cattle supply over 600 lbs was 100%. Unless otherwise noted, Feeder Cattle prices FOB based on net weights after a 2-3% shrink or equivalent, with a 8-12 cent slide > 600 lbs. Livestock reported this week originated from CO, KY, NC, NY, TX, UT.

**Eastern Cornbelt Direct Cattle Report (IL/IN/MN/MO/OH/KY)**

This Week: 461  
Last Reported: 657  
Last Year: 734  
Compared to last week: Numbers very lightly tested this week and not enough steers or heifers to test trends, few sales showing a lower undertone. Demand moderate. Though numbers remain fairly light cattle futures continue to trade on a roller coaster. Supply included: 100% Feeder Cattle (72.7% Steers, 27.3% Heifers). Feeder cattle supply over 600 lbs was 100%. Unless otherwise noted, Feeder Cattle prices FOB based on net weights after a 2-3% shrink or equivalent, with an 8-18 cent slide > 600 lbs. Livestock reported this week originated from KY.

**Kansas Direct Feeder Cattle Report**

This Week: 3,896  
Last Reported: 2,484  
Last Year: 3,395  
Compared to last week: Not enough comparable sales on current FOB steers or heifers for a market trend but a lower undertone was noted. Buyer demand was mixed, with quality and weather having the largest impact on demand this week. Supply included: 100% Feeder Cattle (65.9% Steers, 1.7% Dairy Steers, 32.3% Heifers). Feeder cattle supply over 600 lbs was 98%. Unless otherwise noted, Feeder Cattle prices FOB based on net weights after a 2-3% shrink or equivalent, with an 8-12 cent slide >600 lbs. and up to a 25 cent slide < 600 lbs. Livestock reported this week originated from CO, KS, OK, TX.

**Missouri Direct Cattle Report**

This Week: 479  
Last Reported: 183  
Last Year: 130  
Compared to last week: Feeder steers and heifers not well tested. Demand moderate to good. A strong winter storm is currently passing across much of the country and this will no doubt cripple much of the cattle movement for a while. Many areas won't be above freezing temperatures for the next 10 days. Supply included: 100% Feeder Cattle (100% Steers). Feeder cattle supply over 600 lbs was 100%. Unless otherwise noted, Feeder Cattle prices FOB based on net weights after a 2% shrink or equivalent, with an 8-12 cent slide > 600 lbs. Livestock reported this week originated from MO.

**Montana Direct Cattle Report**

This Week:  
Last Reported:  
Last Year:  
No trades this week.

**New Mexico Direct Cattle Report**

This Week: 3,415  
Last Reported: 995  
Last Year: 194  
Compared to last week: Feeder steers and heifers traded mostly 10.00 lower. Demand slowed some this week ahead of the winter storm forecasted to hit today and linger through the weekend. Supply included: 100% Feeder Cattle (57.1% Steers, 42.9% Heifers). Feeder cattle supply over 600 lbs was 100%. Unless otherwise noted, Feeder Cattle prices FOB based on net weights after a 2% shrink or equivalent, with a 8-12 cent slide >600 lbs. and 15-20 cent slide < 600 lbs. Livestock reported this week originated from NM.

**Northwest Direct Cattle Report (WA/OR/ID/UT)**

This Week: 3,906  
Last Reported: 435  
Last Year: 1,034  
Compared to last week: Not enough current FOB trades to establish a trend. Demand moderate. Supply included: 100% Feeder Cattle (56.2% Steers, 43.8% Heifers). Feeder cattle supply over 600 lbs was 84%. Unless otherwise noted, Feeder Cattle prices FOB based on net weights after a 2% shrink or equivalent, with a 8-12 cent slide > 600 lbs. and 20 cent slide < 600 lbs. Livestock reported this week originated from ID, UT, WA.

**Oklahoma Direct Cattle Report**

This Week: 1,797  
Last Reported: 2,696  
Last Year: 973  
Compared to last week: Feeder steers steady to 5.00 lower. Feeder heifers not well tested. Demand moderate. Supply included: 100% Feeder Cattle (79% Steers, 21% Heifers). Feeder cattle supply over 600 lbs was 100%. Unless otherwise noted, Feeder Cattle prices FOB based on net weights after a 2-3% shrink or equivalent, with a 8-12 cent slide > 600 lbs. Livestock reported this week originated from OK, TX.

**Southeast Direct Cattle Report (AL/AR/FL/GA/LA/MS/TN)**

This Week: 596  
Last Reported: 1,508  
Last Year: 737  
Supply included: 100% Feeder Cattle (66.6% Steers, 33.4% Heifers). Feeder cattle supply over 600 lbs was 74%. Unless otherwise noted, Feeder Cattle prices FOB based on net weights after a 2-3% shrink or equivalent, with up to a 15 cent slide >600 lbs and up to a 20 cent slide <600 lbs. Livestock reported this week originated from AL, GA, TN.

**Southwest Direct Cattle Report (AZ/CA/NV)**

This Week: 680  
Last Reported: 1,267  
Last Year: 0  
Compared to last week, feeders were steady. Trade moderate, demand good. Supply included: 100% Feeder Cattle (100% Dairy Steers). Feeder cattle supply over 600 lbs was 0%. Unless otherwise noted, Feeder Cattle prices FOB based on net weights after a 2-3% shrink or equivalent, with a 5-10 cent slide on calves. 3- 6 cent slide on yearlings. Delivered prices included freight, commissions, and other expenses. Livestock reported this week originated from ID.

**Texas Direct Cattle Report**

This Week: 12,775  
Last Reported: 12,551  
Last Year: 12,311  
Compared to last week: Current FOB steers and heifers sold 2.00 to 7.00 lower. Demand was moderate. The country is bracing for the winter storm sweeping across dumping snow and below freezing temperatures for several days. Supply included: 100% Feeder Cattle (71.3% Steers, 28.7% Heifers). Feeder cattle supply over 600 lbs was 85%. Unless otherwise noted, Feeder Cattle prices FOB based on net weights after a 2-3% shrink or equivalent, with up to a 15 cent slide >600 lbs and up to a 20 cent slide <600 lbs. Livestock reported this week originated from AL, FL, GA, KS, KY, MO, NM, OK, TN, TX.

**Wyoming-Nebraska Direct Cattle Report**

This Week: 210  
Last Reported: 130  
Last Year: 130  
First reported FOB cattle sales in a few weeks a market trend is not applicable. Demand was good. Most cattle in the two reporting states have been going to the sale barns or video sales. Feedlot trade has been at a standstill most of the week. Very limited trade Friday morning in Nebraska at 233.00 has been confirmed sold. Most feedlots would like to get 234.00 or better with this impeding arctic weather upon the state this weekend. Supply included: 100% Feeder Cattle (66.7% Steers, 33.3% Heifers). Feeder cattle supply over 600 lbs was 100%. Unless otherwise noted, Feeder Cattle prices FOB based on net weights after a 2-3% shrink or equivalent, with a 10-12 cent slide > 600 lbs. Livestock reported this week originated from OK, WY

• [Extensive U.S. & Canadian Auction Results are available on The Cattle Range](#)

[^ Contents](#)

**USDA Weekly Hay Reports:** "Click" on links for detailed report

- |                              |                              |  |
|------------------------------|------------------------------|--|
| • <a href="#">Alabama</a>    | • <a href="#">Missouri</a>   | • <a href="#">Oregon</a>               |
| • <a href="#">California</a> | • <a href="#">Montana</a>    | • <a href="#">South Dakota</a>         |
| • <a href="#">Colorado</a>   | • <a href="#">Nebraska</a>   | • <a href="#">Texas</a>                |
| • <a href="#">Idaho</a>      | • <a href="#">New Mexico</a> | • <a href="#">WA/OR Columbia Basin</a> |
| • <a href="#">Iowa</a>       | • <a href="#">Oklahoma</a>   | • <a href="#">Wyoming</a>              |
| • <a href="#">Kansas</a>     |                              |  |

[^ Contents](#)

Although all information is from sources believed to be accurate & timely, The Cattle Range expressly disclaims all warranties, expressed or implied, as to the accuracy of any of the contents provided and shall not be liable for decisions or actions taken based on the data/information/opinions contained within.

Copyright © 2026 - The Cattle Range - All Rights Reserved